

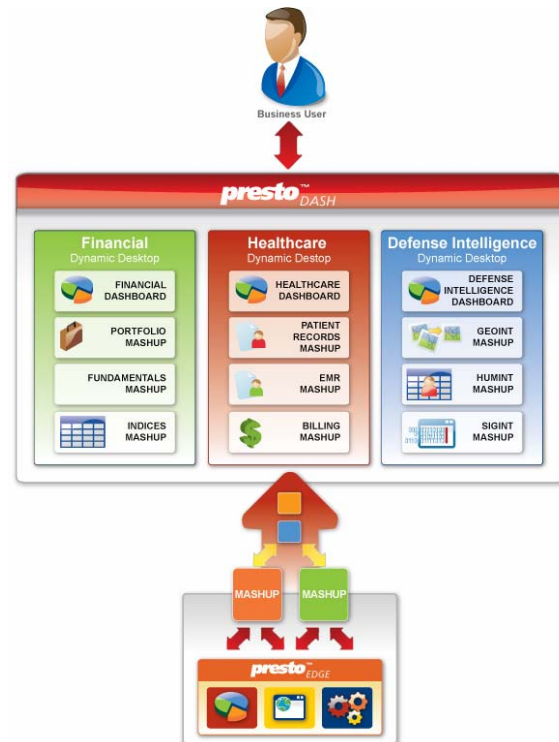
JACK BE™
The user is the killer app

Presto Dash

Web 2.0 Mashup Portal

Presto Dash utilizes the sizzle of Ajax to deliver highly visual mashup canvas for business users. The result is highly interactive situational applications that streamline data analysis to improve decision-making while complying with enterprise mandates for security and governance. Users are able to access and visualize data services from internal, public, or partner sources, rapidly configure web based dashboards and share their analysis with trusted users.

Dash provides enterprise knowledge workers with the ability to consolidate disparate data sources and applications into one dynamic view that can be filtered and displayed based upon a user's needs and preferences. The results in Dash are user-driven based on how IT defines user or group policies for availability of features, data access, and functions on the portal.



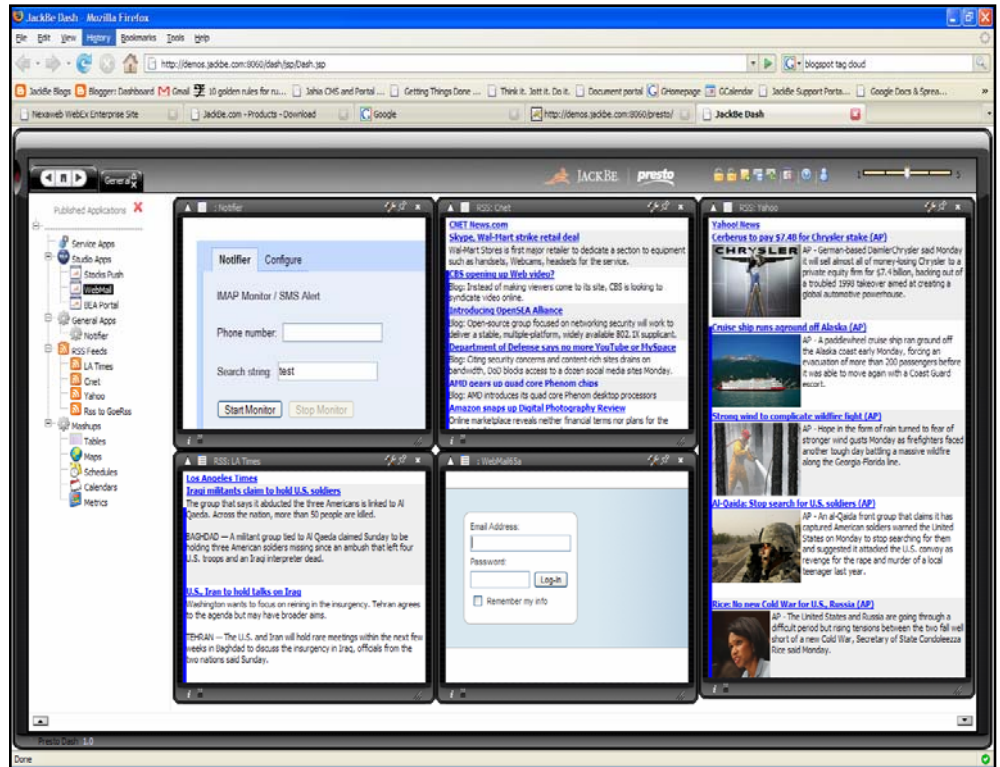
Situational Application Canvas

- Integrates with existing identity management systems or provides out-of-the-box user access and policy creation,
- Named workspace tabs for organizing tasks for data acquisition and manipulation:
 - Add, delete, and rename personal tabs,
 - Specify the data displayed on each tab,
 - Select the layout of each tab.
- Save configured tab layout view for easy retrieval and sharing
- Drag-n-drop functionality of widgets and desktop functions,
- Displays only user authorized content; other users' views may differ, depending on their authorization and privileges
- Integrated sticky note functionality; notes persist while the tab content is in view
- Control the horizontal adjustment of the current workspace view.



Self-Service Access to Internal and External Data Services

Once established by IT, business users will have self-service access to the data services, applications, and mashups that they have permission to access. They are now "off to the races" to access and mashup as they see fit to complete their daily activities. With the growing availability of relevant resources on the public web, Presto Dash customers also have the option of allowing users unrestricted access to consuming and visualizing internet data services from their Dash canvas.



- Secure on-demand access and visualize REST, WML, KML, SOAP, WSDL, RSS, & DB Services
- Drag-n-drop pre-built widgets from widget palette onto desktop
- Widget API for quickly consuming public widgets
- Service tree populated with policy and user defined accessible services
- Pop-up widget configuration windows for defining binding, filtering, field selection, and other widget display behaviors
- Save and share configured widget view for easy retrieval and reuse
- As new data services and mashups come on-line via the Presto Edge server, Dash users can search and browse view these new assets and add them to their mashup canvas for instant use



Case Study: Defense Intelligence Agency (DIA)



Challenges

- Improve Intelligence Analysts' Effectiveness
- Reduce Manual Integration Work
- Support Creation of Situational Apps

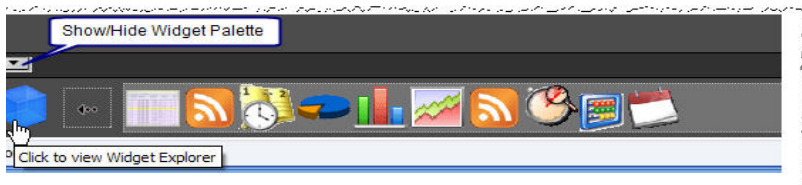
JackBe Solution

- User-integration, allowing user-defined service mashing & information collaboration.

www.jackbe.com
4600 North Park Avenue
Suite 200
Chevy Chase, MD 20815
240.744.7620
info@jackbe.com

Quickly Visualize Data & Mashups with the Right View

Sometimes, there just isn't enough time the day. Enterprise power users need to see and present information from SOA and other sources through clean, professional, Web 2.0-style widgets. Presto Dash allows you to customize the available viewing options that each user accesses. You are encouraged to leverage your existing widgets or use widgets that are available on the internet. The list below includes widgets that you can make available when deploying Dash to your users.



- Adobe Flash Charting – visualize quantitative data sets using highly customizable bar, pie, and line graphs
- Google Mapping – quickly plot geo-tagged data on Google Maps
- Tally - Light Analytics capabilities, e.g. search, filter, & sort through data,
- RSS – Any type of web feed format used to publish frequently updated digital content, such as blogs, newsfeeds, or podcasts,
- Graph - Organizes and presents data in a simple display as bar, line, or pie charts,
- HTML/Portlet - Consume disparate WSRP enabled portlets,
- Table - creates a table element for column layouts that are configurable by the user,
- Map - Display geo-tagged information mashed on a configurable map; base map layer source is predefined from any mapping service,
- Timeline or Calendar - Creates a calendar or timeline display that is configurable by the user,
- DIY – Leverage Presto API's to rapidly build and/or consume external widgets.

About JackBe

JackBe provides a new user-driven tier of integration technology to power enterprise mashups. The resulting value is increased business unit freedom to access and integrate data & collaborate in a new style featuring rich Web 2.0 interaction. JackBe's standards-based Presto mashup platform unites the strengths of Ajax, SOA, & existing IT investments to help enterprise users be the killer app. JackBe has deployed Enterprise Web 2.0 solutions for over 4 million users in the financial services, government, consumer goods, healthcare and telecommunications industries. Notable customers include Citi, the Defense Intelligence Agency, and Nutrisystem.