

## Web-Based Real-Time Information Sharing

The JackBe Enterprise Webtop Framework<sup>TM</sup> (EWF) is a browser-based platform that combines a rich user interface with complete customization capabilities and one-click aggregation of enterprise data sources and services. Based on JackBe's industry-leading Ajax/Rich Internet Application (RIA) technology, *NQ Suite*, the EWF delivers desktop-like capabilities within the browser. It consists of a collection of pre-built user interface components and facilities to create a new generation of Web 2.0 applications that offer:

- Highly intuitive and interactive user interfaces
- High-performance with rich, desktop-like functionality
- Enterprise mashup capability to integrate various services and data sources
- Robust security and governance features
- Low demands on network and system resources

The EWF was designed to support a wide variety of applications, including Intelligence Analysis, Enterprise Virtual Operation Centers, Situation Analytics, and Administrative Support.

### Product Description

Built on JackBe's proven Ajax technology, the EWF enables seamless integration of enterprise-grade Ajax with Service-Oriented Architecture (SOA) into innovative new applications. EWF consists of a highly customizable and extensible user interface (UI) tier along with an integration tier that allows rapid binding of services and data sources to UI components.

The UI tier offers a menu-based catalog of services and data sources, together with common interface components such as tab, table, form, calendar, and ticker. Advanced features such as business rule validation, auto-completion, and mouseover are also included. The UI tier allows the easy creation and integration of custom components based the specific needs of each deployment.

The integration tier employs a declarative mechanism to define the behavior and interactions between UI components without extensive coding. Data and services are bound to UI components via definition in XML structures. The result is well-structured architecture and ease of maintenance.

With JackBe's EWF, users select the desired enterprise data sources and quickly create customized, real-time views of the data and related events. The resulting views can be used for monitoring, report generation, executive presentations, and secure data sharing.

The EWF is deployed entirely through standard Web browsers. It requires no plug-ins or client-side software installation, and offers an extensible framework that dramatically reduces the time and effort required to create, integrate and enhance new applications that support user needs.

JackBe provides the EWF as part of a total solution that includes software and services, architectural guidance, training, and product support.

### The JackBe Enterprise Webtop Framework Offers Many Benefits:

#### Benefits for the Enterprise

- Facilitates sharing of real-time information within and between departments
- Strengthens analytical capabilities across the enterprise
- Eliminates cross-department IT redundancy
- Reduces cross-department and cross-platform barriers

#### Benefits for End Users

- Provides real-time, flexible desktop-like dashboard view of Web services
- Improves productivity in gathering, analyzing and sharing business activity information

#### Benefits to IT Departments

- Enables faster application development with lower implementation risk using proven JackBe technology
- Allows quick, efficient binding of Web services to GUI widgets
- Delivers lower total cost of ownership (TCO)
- Places low demand on network and system resources
- Uses standards-based Web technologies with no plug-ins or client software installation
- Ensures governance, security, and scalability through server-based components

---

*“ The JackBe NQ Suite was designed and built with a depth of understanding of and a remarkable sensitivity to the issues facing developers who are creating rich-client applications. ”*

-- Steve McClure  
Program VP, Software Research Group  
IDC

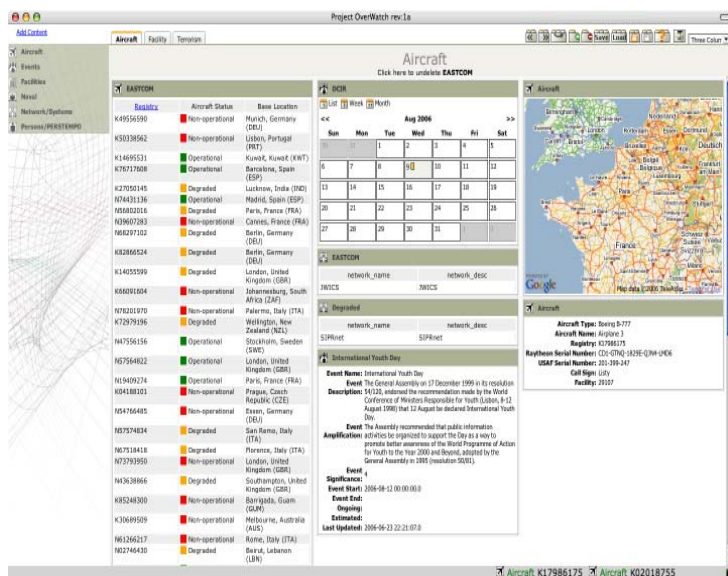
---



## Success Story: U.S. Defense Intelligence Agency

The EWF was recently used to create the Overwatch solution for the U.S. Defense Intelligence Agency (DIA). Overwatch is a Virtual Operating Center (VOC) application that integrates multiple intelligence sources into a personalizable, desktop-like intelligence asset dashboard for the real-time analysis of data.

Constrained by a tight deadline, DIA chose JackBe software and services because it eliminated significant time and risk in developing an Ajax-based solution. Alternative solutions did not provide the version control, browser-server asynchronous communications tier, and API required to make this project a success. JackBe also provided expert professional services consultants, trained in the use of JackBe software, to quickly join the project team and ensure knowledge transfer and rapid development.



Independent of the project constraints, intelligence gathering and sharing had been a laborious process, requiring use of multiple 'stove-pipe' all-source applications. The data was then manually compiling into a sharable form like a PowerPoint presentation. This process took time, resulting in dated intelligence for the ultimate consumers and decision-makers.

Overwatch was designed to address these challenges by empowering the end user to quickly paint a picture of situational awareness across various intelligence data sources, using a paradigm of drag-and-drop and bookmarking of the resulting briefing in a private workspace for future use and sharing.

The process begins with a user selecting an Area of Responsibility (AOR) such as a Combatant Command, which limits all intelligence to that specific AOR. The user then selects the type of intelligence such as a facility, personnel, naval vessel, aircraft, event or travel, to further limit intelligence to that specific type. Additional filtering can be specified depending on the type. Once filtered, the resulting intelligence asset can be updated, and comments made for rapid information sharing to occur.

Additional enhancements to Overwatch now being considered include incorporation of more SOA-based back-end intelligence data sources and expanded end user functionality such as mapping/geospatial capabilities.

© 2006 JackBe Corp. All rights reserved.

JackBe and JackBe Enterprise Webtop Framework are trademarks of JackBe Corporation. All other products mentioned are trademarks of their respective manufacturers.

## About JackBe

JackBe Corporation is a pioneer and industry leader at the center of the Ajax/SOA market. Founded in 2001 and headquartered in Chevy Chase, Maryland, JackBe's goal from the outset was to enable the next generation of browser-based applications.

JackBe is the first to integrate the desktop-like interactivity of Ajax with the flexibility and reusability of SOA to deliver complete Rich Enterprise Applications (REA). Just as the client/server paradigm enabled a leap beyond monolithic mainframe applications, JackBe's REA solutions deliver dramatic new opportunities for creating and delivering powerful business applications over the Web.

JackBe already counts among our satisfied clients more than 35 industry leaders worldwide supporting more than 4 million end users, including Citigroup, McKesson, Sears, Tupperware, Forbes, and the U.S. Defense Intelligence Agency. Our deployments and deep expertise span the financial and information services, government, online commerce and telecommunications sectors.

Visit our website at [www.jackbe.com](http://www.jackbe.com) to learn more about our Ajax/SOA solutions. Then give us a call to talk about your specific needs and goals for your Web applications—and let us put our proven products, services, and expertise to work for you!

*“The use of Ajax for such a complex and critical application within the DIA is a big win for JackBe and a strong endorsement of Ajax in general. It proves the enterprise-grade capabilities of both JackBe's tools and consulting capabilities as the company works to deliver similar rich, interactive front-ends to the data assets of other intelligence agencies.”*

- Ron Schmelzer  
Sr. Analyst & Founder  
ZapThink